

Overview

SSO REDUCTION PROGRAM

Jeff Haby

Director, Sewer System Improvements

February 4, 2014

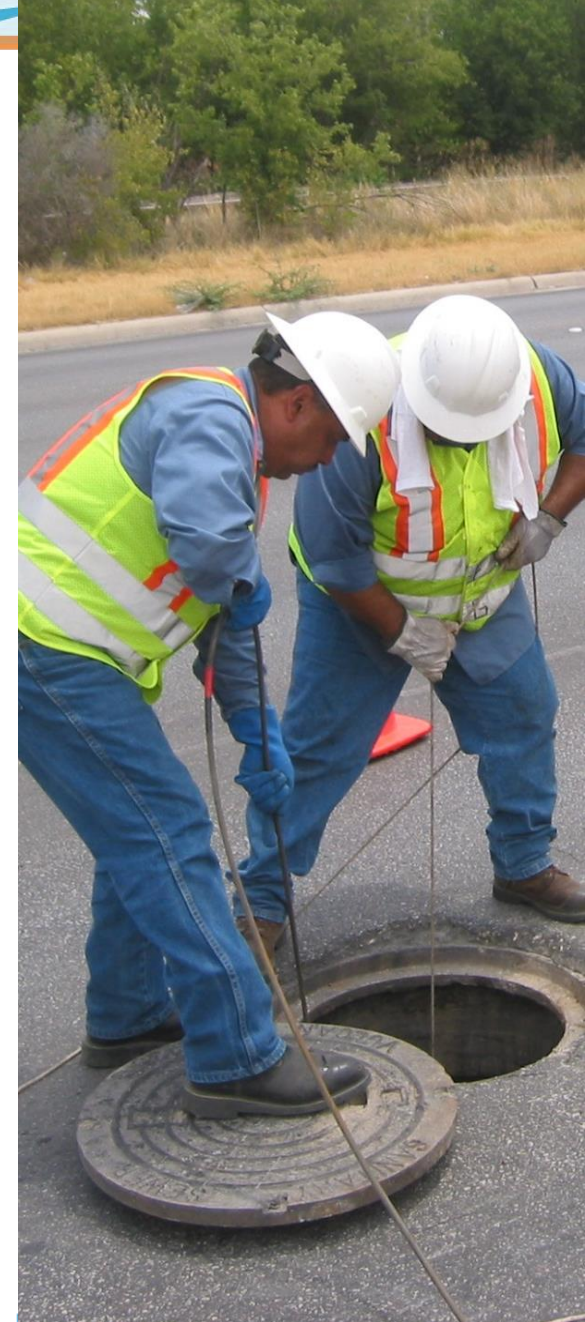
Rate Advisory Committee Meeting



SSO Reduction Program

Overview

- Sanitary Sewer Overflows
- Consent Decree Overview
- Major Initiatives:
 - Cleaning
 - Visual Inspection
 - Capacity
 - Repair or Replace
 - Fix or Remove Lift Stations
- Projected Costs





Sanitary Sewer Overflows

- SSO = Unauthorized discharges of raw sewage from municipal sanitary sewers
- Caused by:
 - blockages,
 - main breaks,
 - sewer defects allowing storm water to overload the system,
 - operation & maintenance,
 - power failures at Lift Stations,
 - inadequate sewer design,
 - vandalism
 - etc.
- Clean Water Act

CD Overview:

UNITED STATES DISTRICT COURT
WESTERN DISTRICT OF TEXAS
SAN ANTONIO DIVISION

- Time Line

1. 2007-2013 Negotiations
2. July 23, 2013 Lodged
3. October 15, 2013 Entered
4. 10-12 Year Duration

- 8 Major Components:

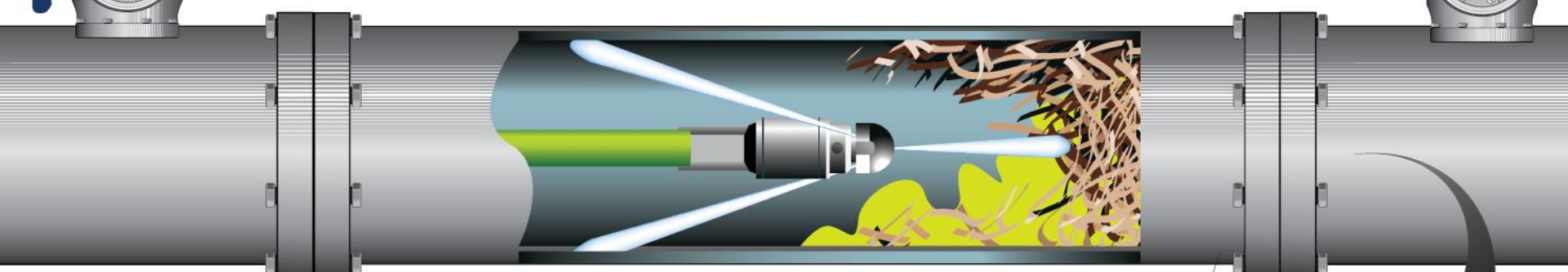
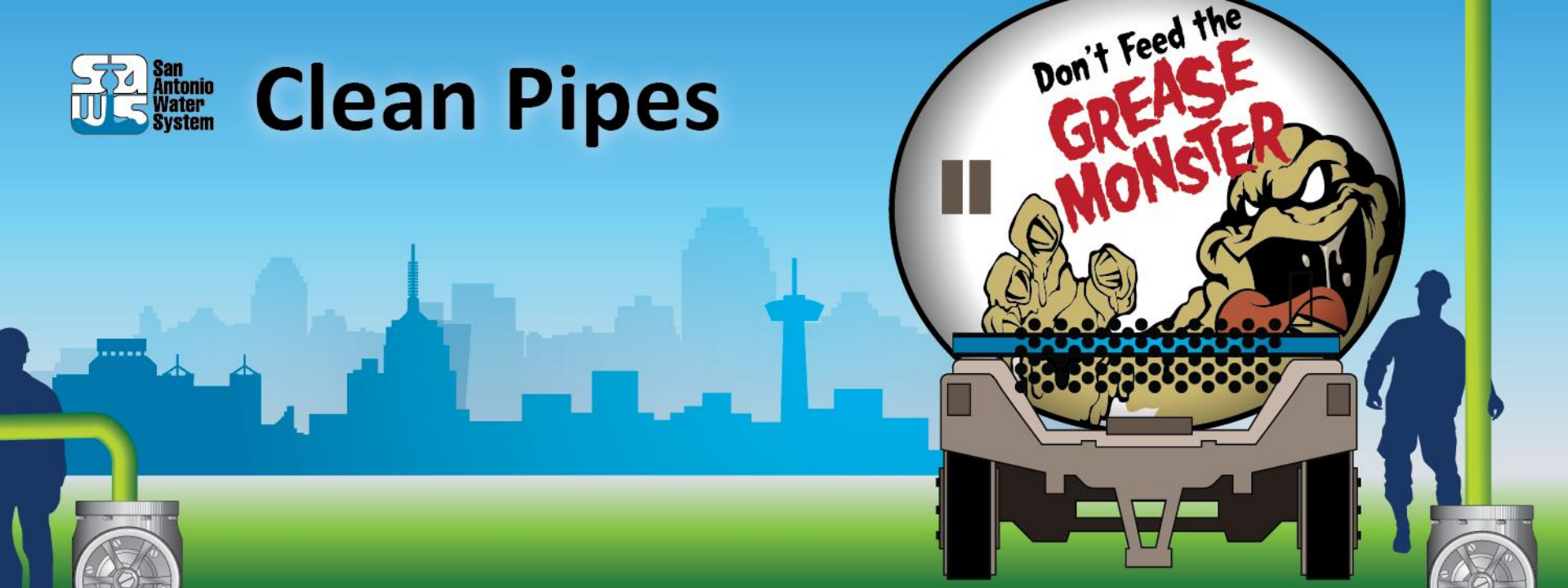
1. Capacity, Management, Operation & Maintenance (CMOM)
2. Early Action Program
3. Condition Assessment & Remedial Measures
4. Capacity Assessment & Remedial Measures
5. Lift Stations
6. Force Mains
7. Water Quality Program
8. Reporting

UNITED STATES OF AMERICA,	§	
	§	
and	§	Civil Action No.
	§	
STATE OF TEXAS,	§	
	§	
Plaintiffs,	§	
	§	
v.	§	
	§	
SAN ANTONIO WATER SYSTEM,	§	
	§	
Defendant.	§	

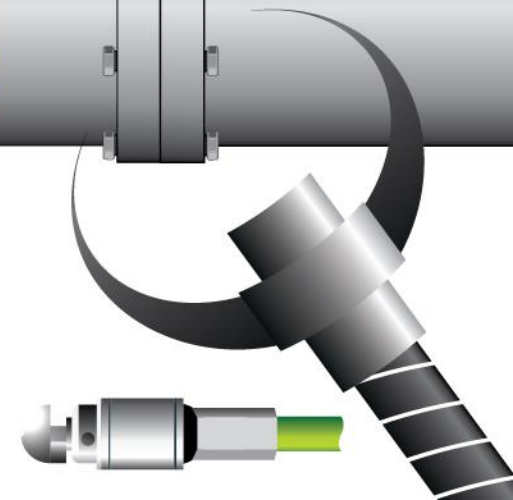
CONSENT DECREE



Clean Pipes



Majority of sewer spills in San Antonio are caused by grease and debris.



What we find...





San Antonio Water System

Visual Inspection



All 5,200 miles of SAWS sewers will be examined over the next 4 to 10 years.

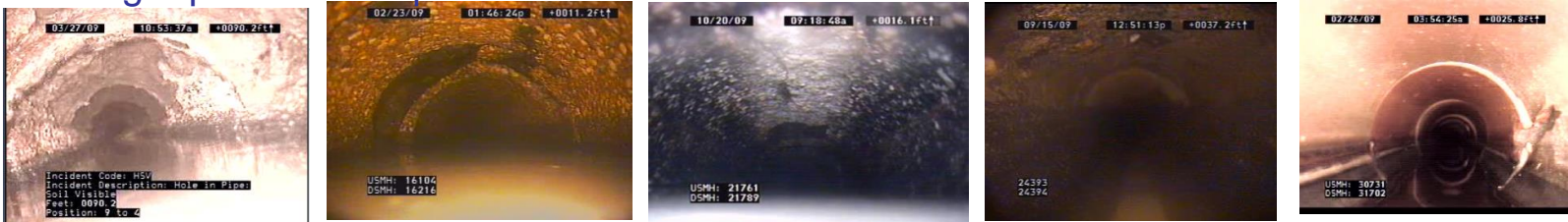


Examples of Pipe Condition

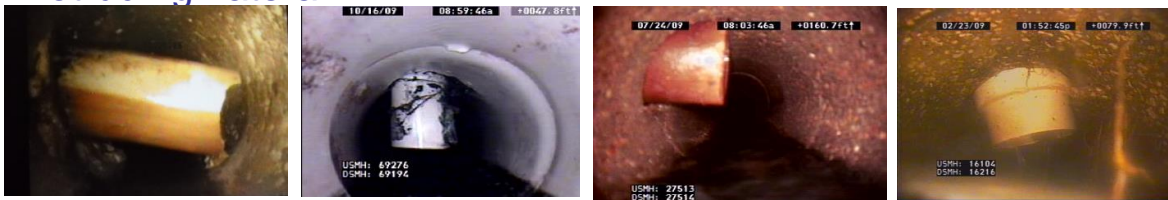
Collapsed Pipe



Missing Pipe/Hole in Pipe



Protruding Lateral



Protruding Gasket



Poor Point Repair





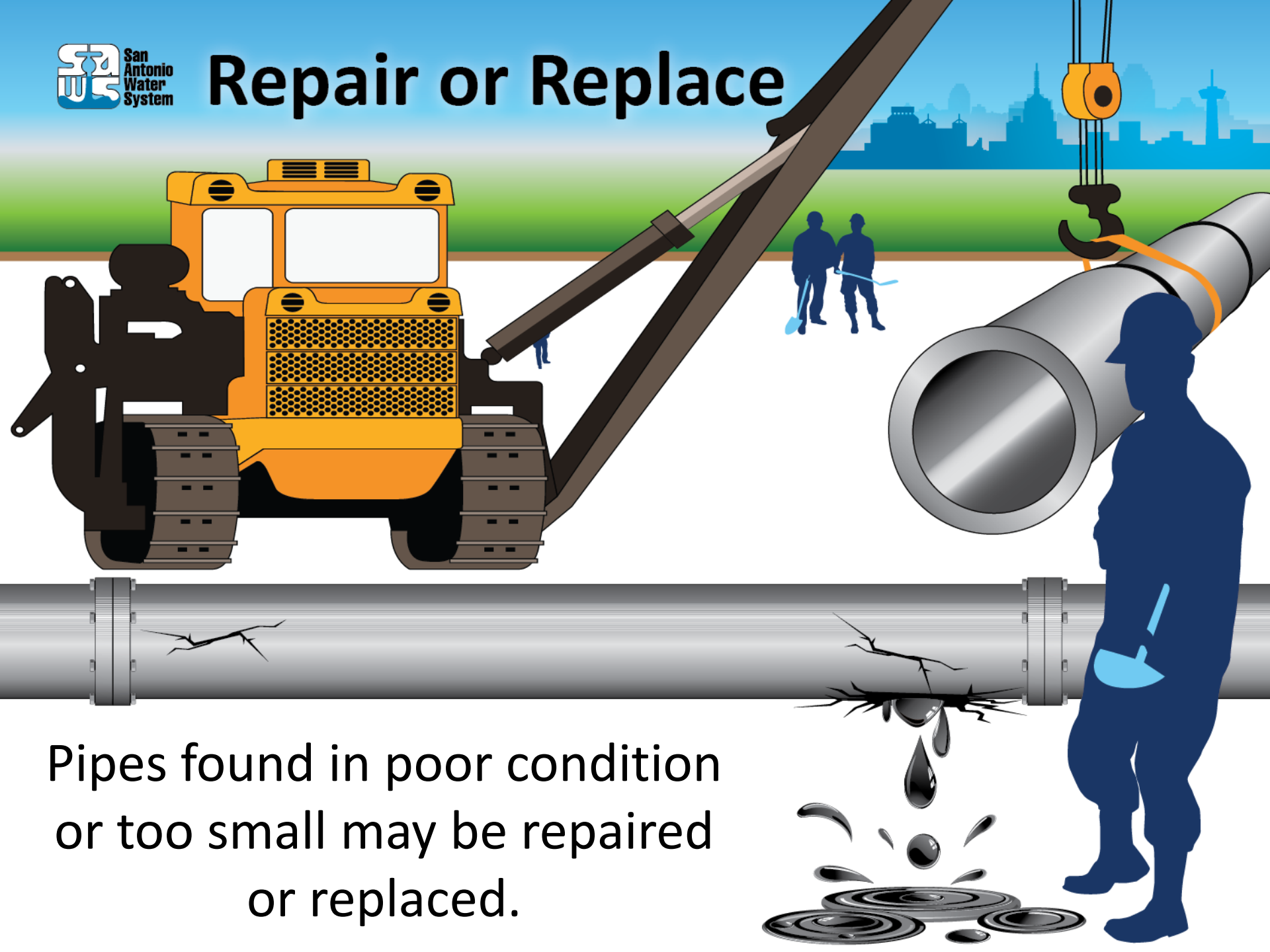
San Antonio
Water
System

Measure Capacity

Pipes that are too small for the flow may need to be replaced.



Repair or Replace



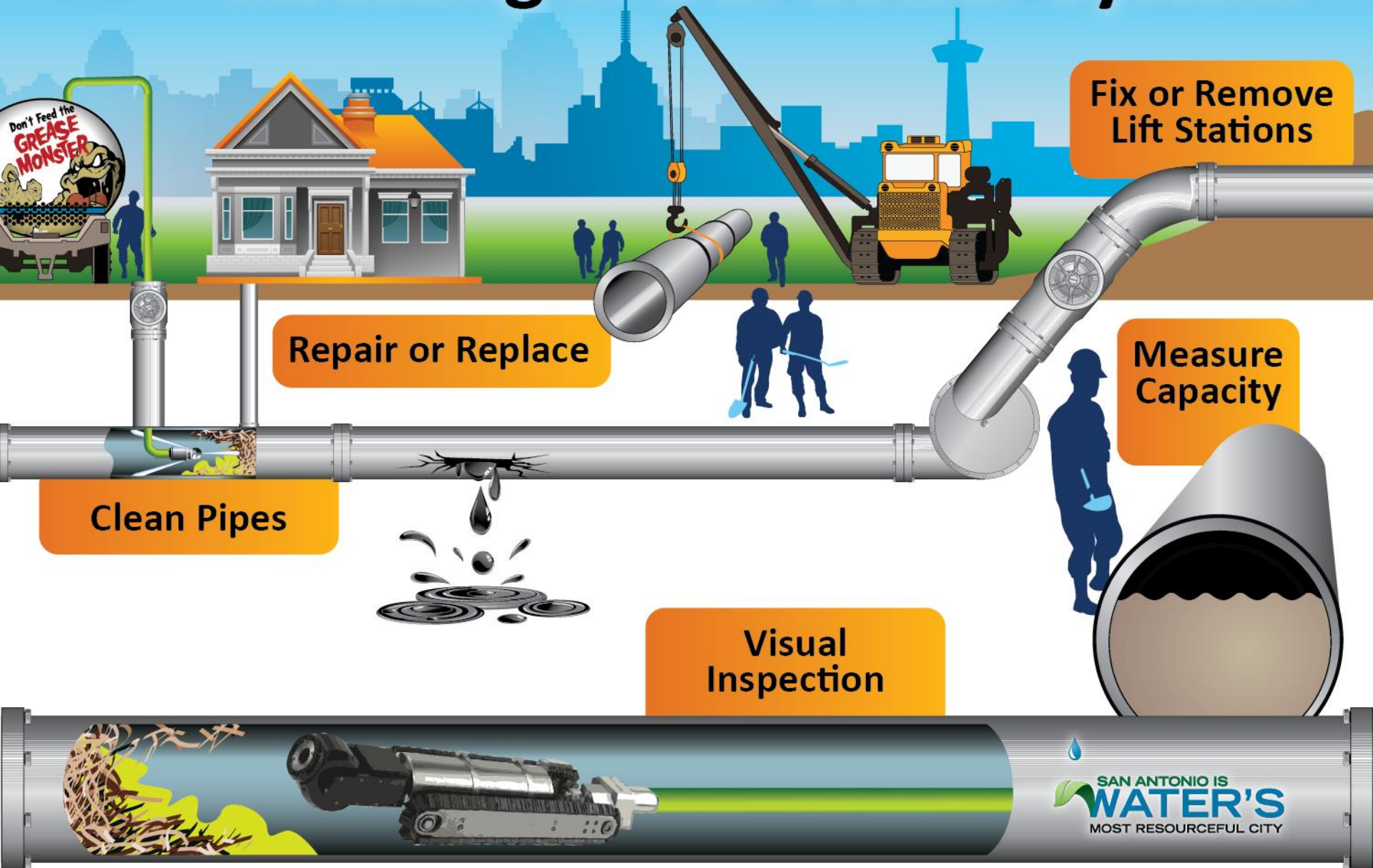
Pipes found in poor condition or too small may be repaired or replaced.

Fix or Remove Lift Stations



Extra attention to pumps
and equipment that
move sewage uphill.

Investing in Our Sewer System



Projected Sewer System Investments

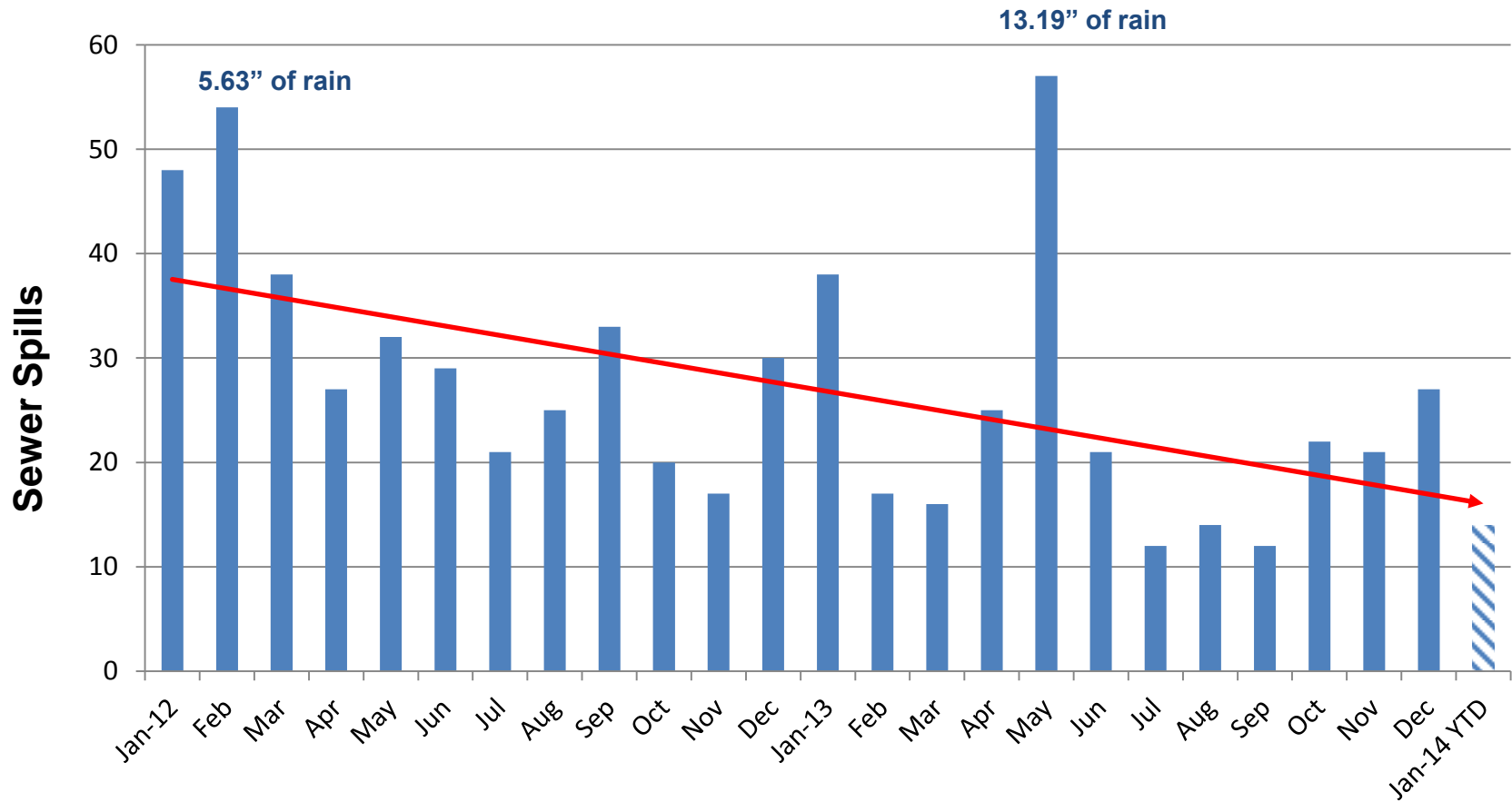
Projected Over 10 Yrs	Operating	Capital	Total
Total Investment After the Consent Decree	\$251.7 M	\$840.4 M	\$1.092 B

Consent Decree Summary

- The agreement with EPA is focused on reducing sewer spills and designed to be cost-effective
- It is a responsible investment that will protect our community and environment as well as improves service to our ratepayers

Sewer Spills Reduced 2012-2014 YTD

Sewer Investments are Working



Overview

SSO REDUCTION PROGRAM

Jeff Haby

Director, Sewer System Improvements

February 4, 2014

Rate Advisory Committee Meeting

