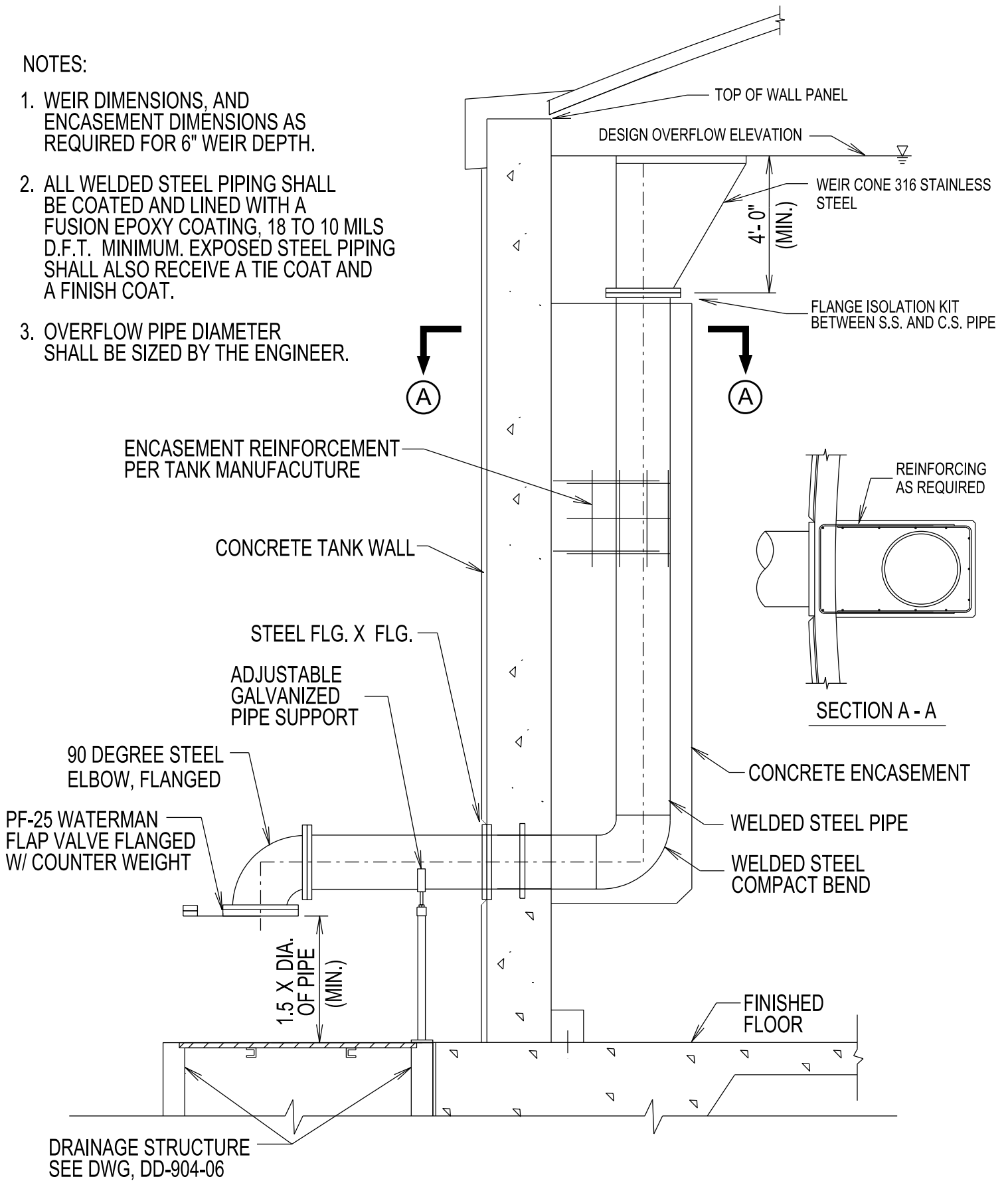


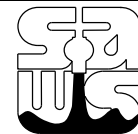
NOTES:

1. WEIR DIMENSIONS, AND ENCASEMENT DIMENSIONS AS REQUIRED FOR 6" WEIR DEPTH.
2. ALL WELDED STEEL PIPING SHALL BE COATED AND LINED WITH A FUSION EPOXY COATING, 18 TO 10 MILS D.F.T. MINIMUM. EXPOSED STEEL PIPING SHALL ALSO RECEIVE A TIE COAT AND A FINISH COAT.
3. OVERFLOW PIPE DIAMETER SHALL BE SIZED BY THE ENGINEER.



DD-904-07

SAN ANTONIO WATER SYSTEM  
SAN ANTONIO, TEXAS



APPROVED:  
NOV 2011  
REVISED:  
MAY 2014

SHEET  
1 OF 1

OVERFLOW DETAIL