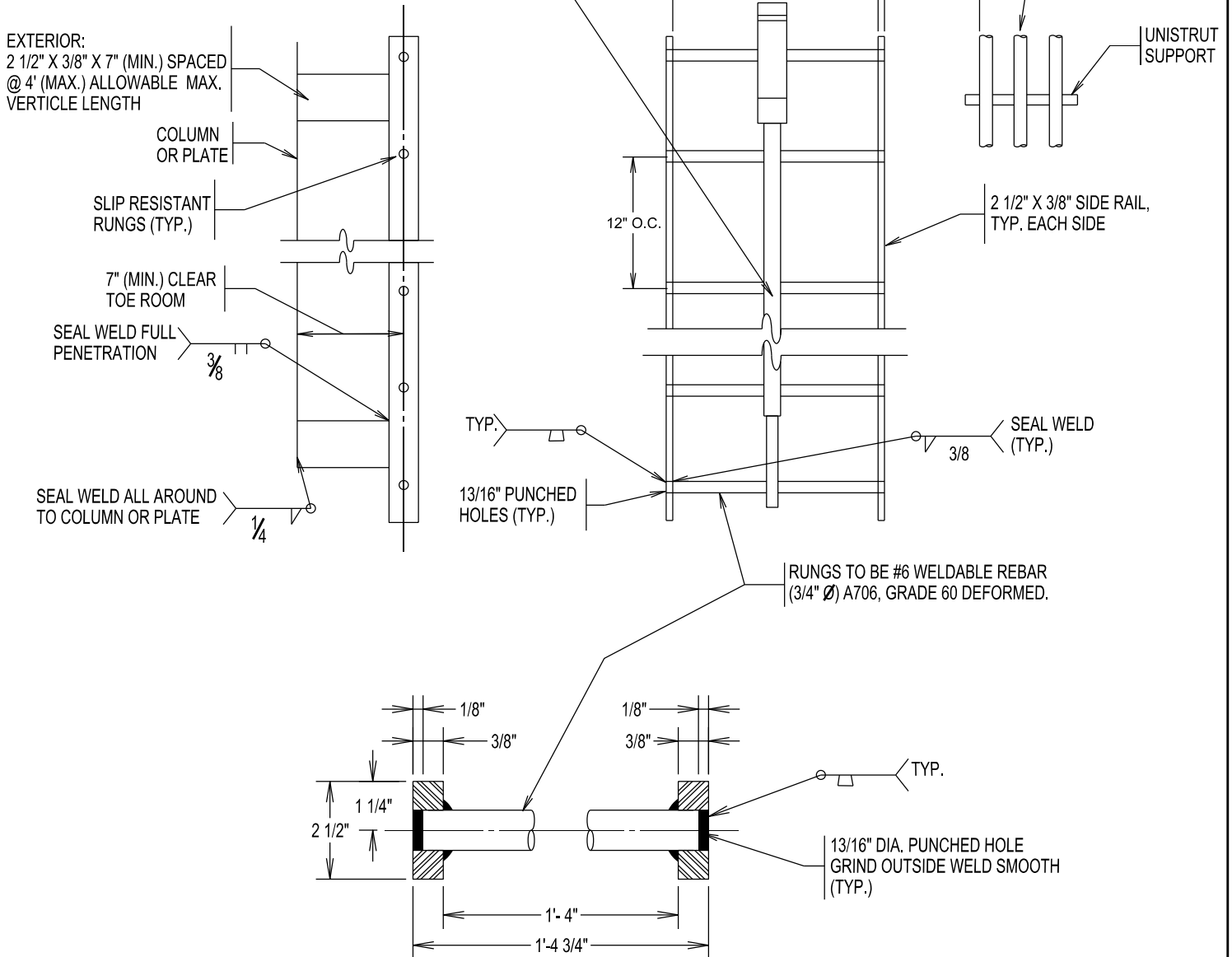


NOTES:

1. ALL WELDS TO BE CONTINUOUS FULL FILLET SEAL WELDS MINIMUM.
2. RUNGS TO BE SLIP RESISTANT AS APPROVED BY SAWS.
3. ALL LADDERS SHALL BE WELDED ALONGSIDE RAILS AND NOT BOLTED.
4. ALL LADDERS TO BE CARBON STEEL PAINTED.
5. CONTRACTOR TO VERIFY ALL LENGTHS AND DIMENSIONS PRIOR TO FABRICATION TO INSURE 7" MINIMUM TO 12" MAXIMUM TOE CLEARANCE FROM CENTERLINE OF RUNGS TO FACE OF WALL
6. THE FIRST RUNG OFF THE TANK PEDESTAL FLOOR SHALL BE INSTALLED 17" (FROM CENTER OF RUNG) ABOVE THE FINISHED FLOOR ELEVATION.

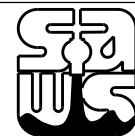
STAINLESS STEEL DBI/SALA LAD-SAF FLEXIBLE CABLE LADDER SAFETY SYSTEM FOR ALL LADDERS. SAFETY SYSTEM MUST INCLUDE TOP BRACKET, BOTTOM BRACKET, CABLE (3/8"), CABLE GUIDE, AND CABLE SLEEVE (6116502) TO BE INSTALLED BY QUALIFIED PERSONNEL. INSULATE CONNECTORS AT INTERIOR RUNGS

EXTERIOR:  
2 1/2" X 3/8" X 7" (MIN.) SPACED @ 4' (MAX.) ALLOWABLE MAX. VERTICLE LENGTH



DD-903-14

SAN ANTONIO WATER SYSTEM  
SAN ANTONIO, TEXAS



APPROVED:  
MARCH 2011

SHEET  
1 OF 2

LADDER DETAILS

REVISED: