

T.B.M. #1 SET "P" IN CURB 143E RIGHT OF STREET STA. 0+63 (STREET "A"), ESE WITON = 829.49 (BLVD 18 DATUM)

WESTOVER HILLS BLVD.  
(110' WIDE R.O.W.)



DEL MAR INVESTMENT GROUP, LTD., et al  
116.779 ACRES - "TRACT II"  
VOL.6307, PAGE 1900, B.C.R.P.R.  
(REMAINDER)

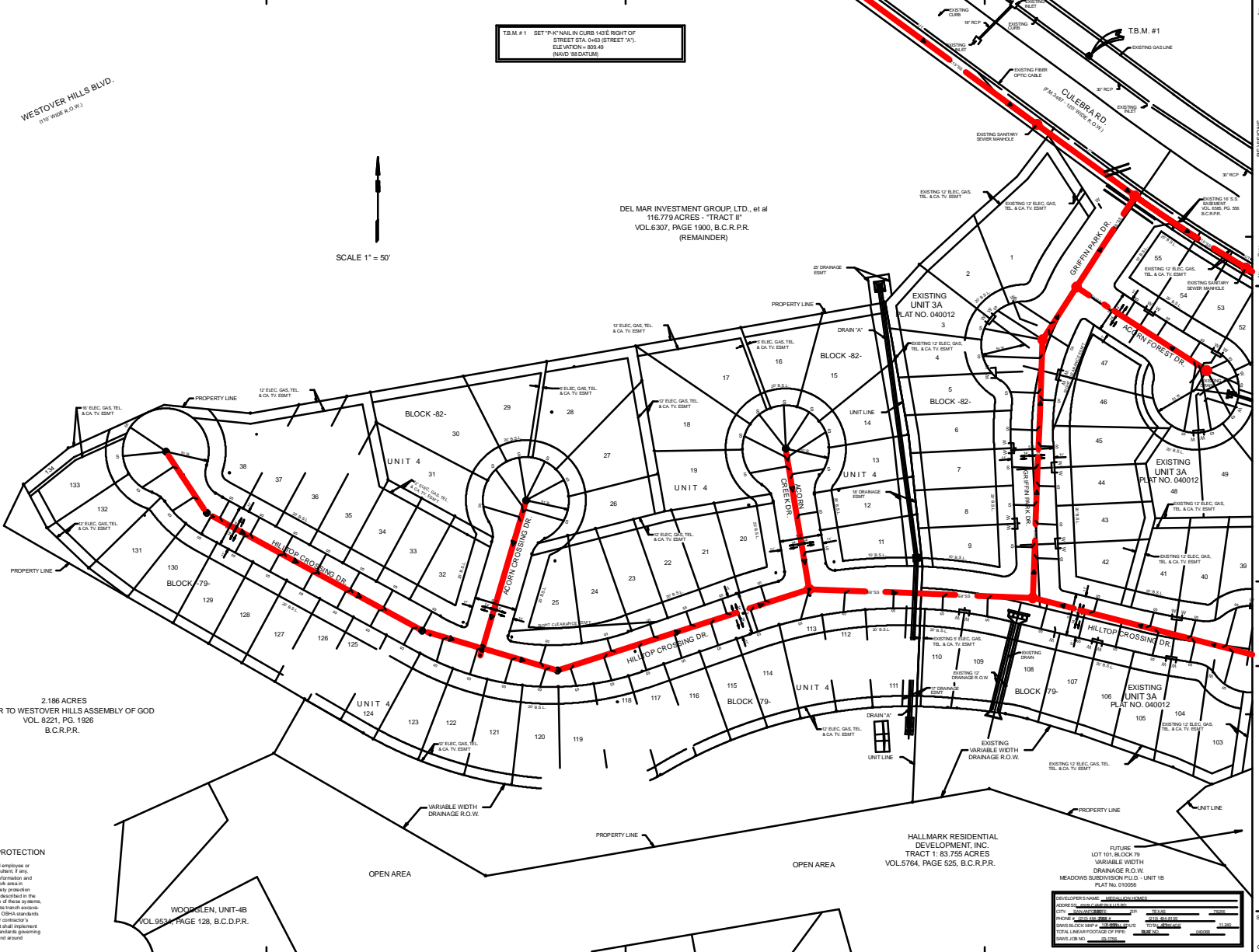
2.186 ACRES  
DEL MAR TO WESTOVER HILLS ASSEMBLY OF GOD  
VOL. 6221, PG. 1928  
B.C.R.P.R.

WOODGLEN, UNIT-4B  
VOL.9554, PAGE 128, B.C.D.P.R.

HALLMARK RESIDENTIAL  
DEVELOPMENT, INC.  
TRACT 1: 83.755 ACRES  
VOL.5764, PAGE 525, B.C.R.P.R.

DEVELOPER'S NAME	DEL MAR INVESTMENT GROUP, LTD.
APPROVED BY	[Signature]
CITY	DEL MAR, CALIF.
PROJECT #	17
DATE BLOCK MAP	08/20/2018
TITLE	OVERALL LAYOUT
TOTAL SHEET FOOTPRINT	11,200
DATE JOB NO.	17-0000

**TRENCH EXCAVATION SAFETY PROTECTION**  
Contractor and/or contractor's independently retained employee or structural design/electrical/safety equipment contractor, if any, shall review these plans and available geotechnical information and the anticipated installation closely within the project work area in order to implement contractor's trench excavation safety protection systems, programs and/or procedures for the project described in the contract documents. The contractor's implementation of these systems, programs and/or procedures shall provide for adequate trench excavation safety protection that comply with as a minimum, OSHA standards for trench excavation. Specifically, contractor and/or contractor's independently retained employee or safety consultant shall implement a trench safety program in accordance with OSHA standards governing the presence and activities of individuals working in and around trench excavation.



**REVISIONS**

NO.	DATE	DESCRIPTION

**MEADOWS SUBDIVISION P.L.D. - UNIT 4**

**SANITARY SEWER OVERALL LAYOUT**

SHEET NO. **17**

OF 22