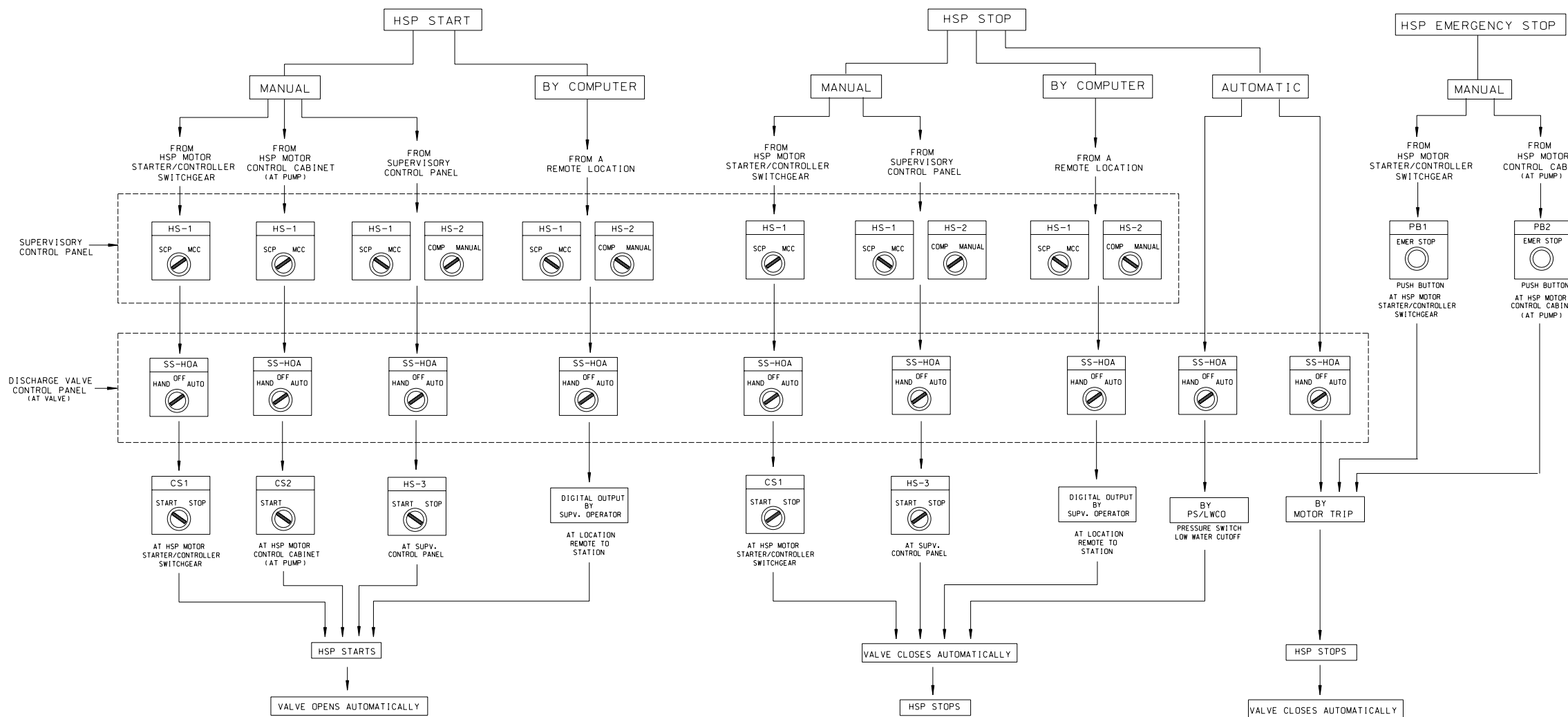
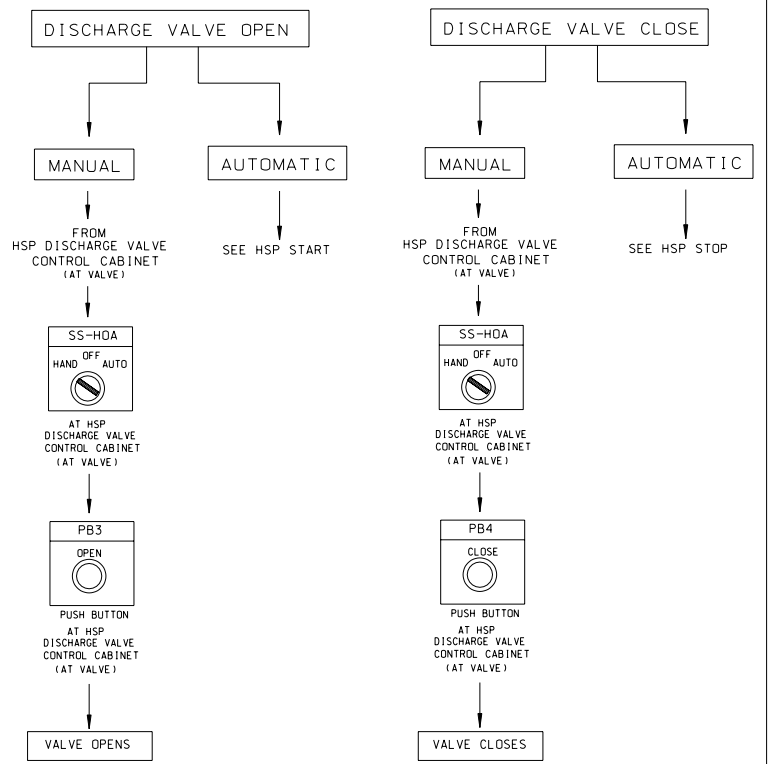


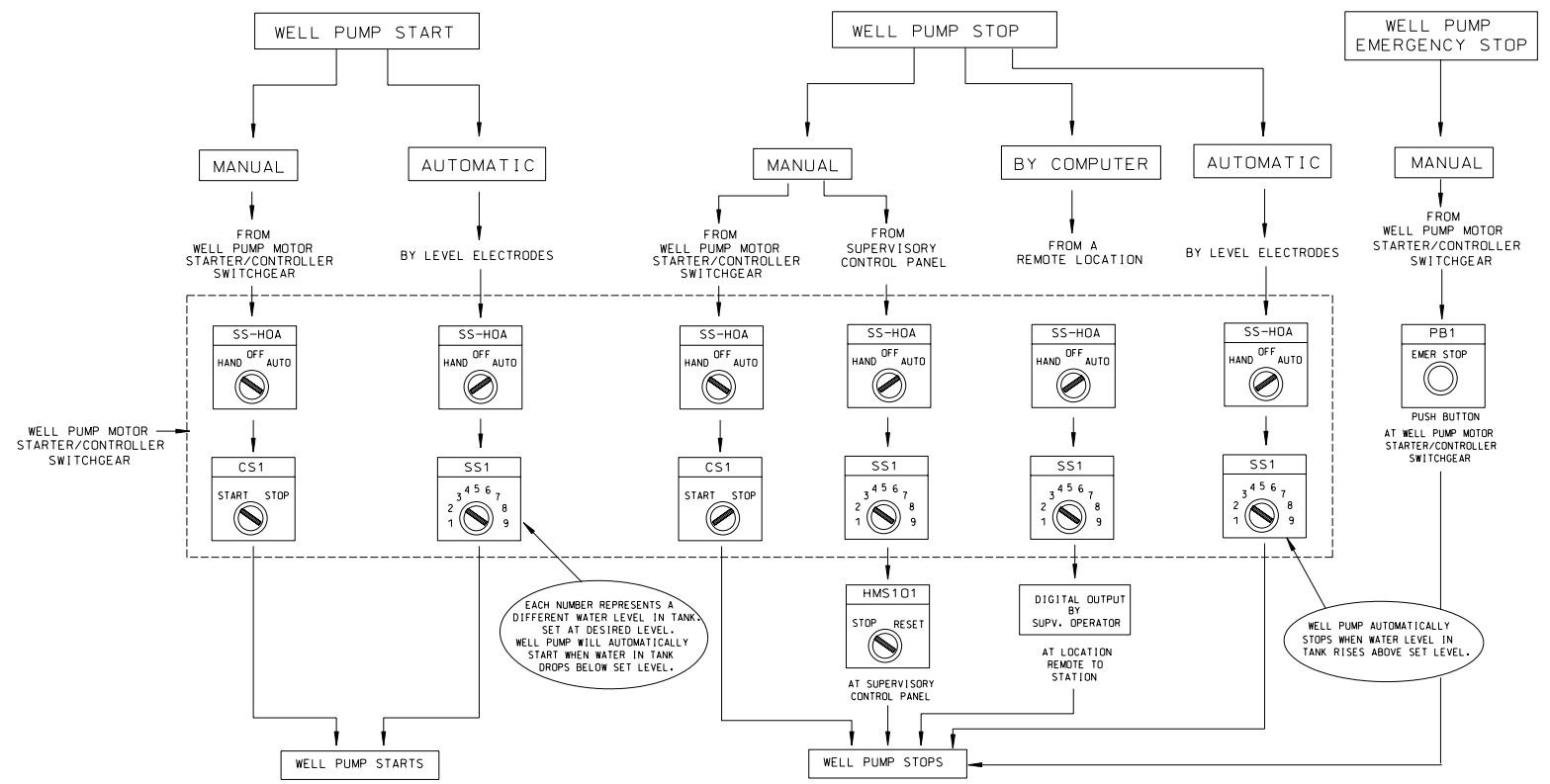
HIGH SERVICE PUMP OPERATING PROCEDURE



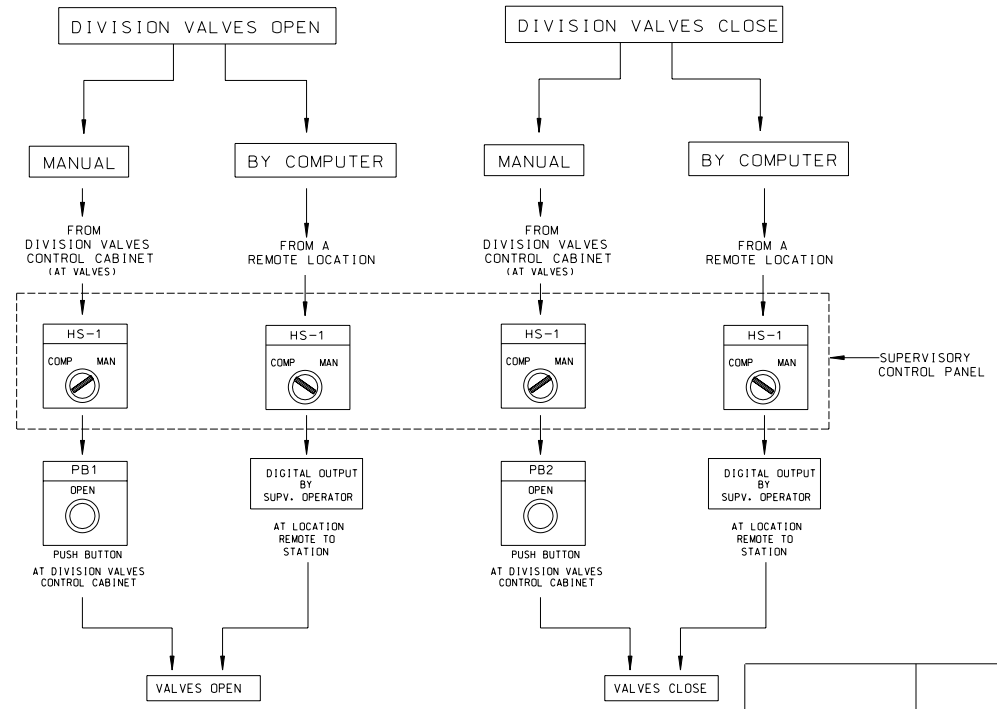
HSP DISCHARGE VALVE OPERATING PROCEDURE



WELL PUMP OPERATING PROCEDURE



DIVISION VALVES OPERATING PROCEDURE (SERVICE LEVEL 6 TO 5A)



No.	Revision	Drawn	Approved	Date
Revisions				
DESIGN STANDARDS PUMP STATION OPERATING LOGIC				
Developer SAN ANTONIO WATER SYSTEMS				
Cont. Budget Proj.				
SUBMITTED GRUBB ENGINEERING, INC.				
APPROVED _____				
Map No.				Sheet
Section No.			Job No.	
Dr. Rdcj Ch				E24