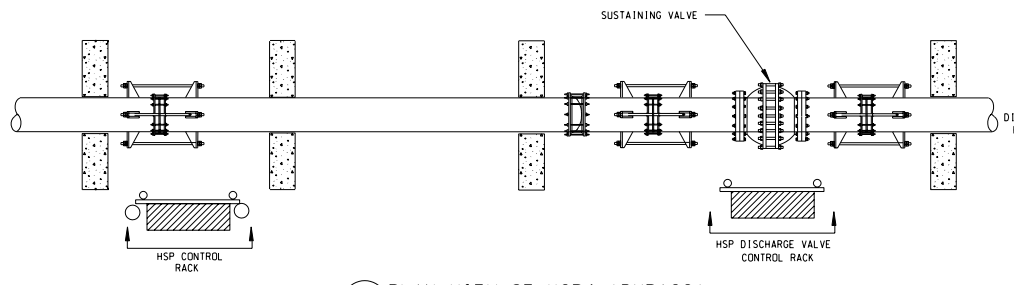
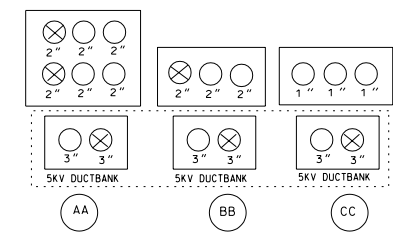
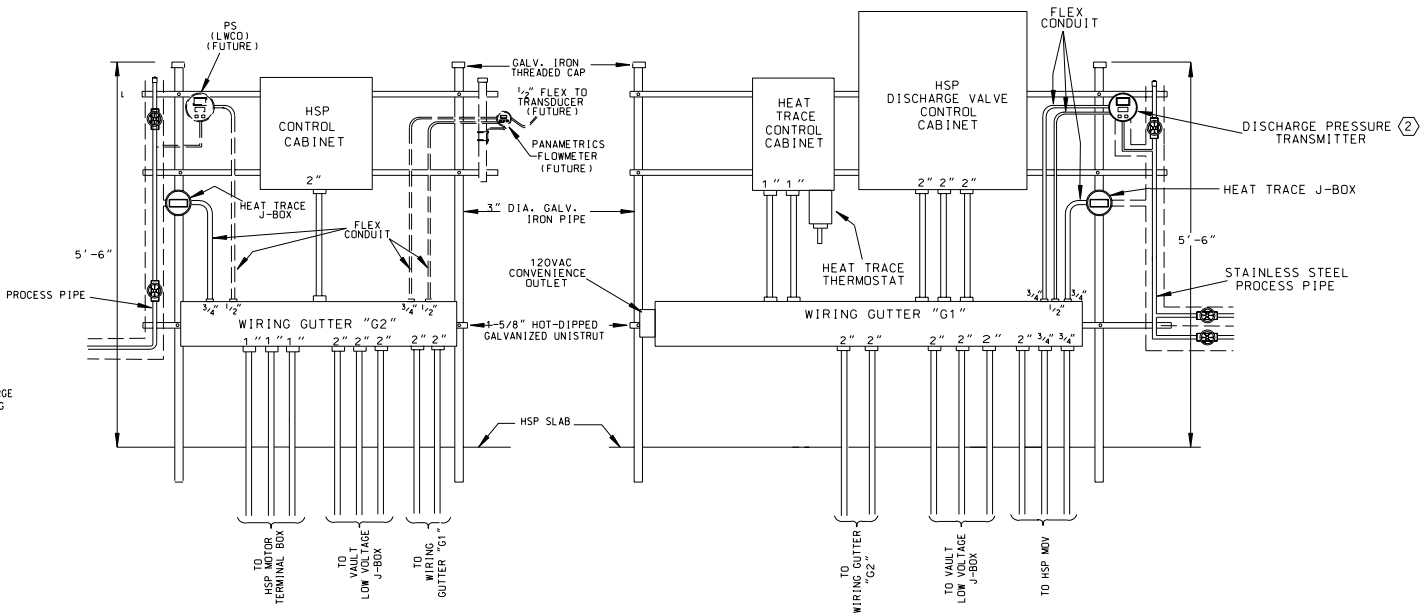


HSP CABLE & CONDUIT LAYOUT
 NOTE: 1. DIMENSIONS INSIDE CIRCLES INDICATE CONDUIT SIZE
 2. FLEX CONDUIT SHALL BE FLEXIBLE METAL, LIQUID-TIGHT
 3. ALL WIRING IS FUTURE EXCEPT FOR CKT. DPT, CKT. DPTP, CKT. HT, CKT. DPT-HT, CKT. PS-HT, CKT. SVLS

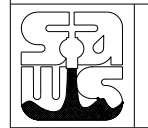


PLAN VIEW OF HSP4 (BYPASS)
N. T. S.



HSP CONTROL RACK
N. T. S.

HSP DISCHARGE VALVE CONTROL RACK
N. T. S.

No.	Revision	Drawn	Approved	Date
Revisions				
 DESIGN STANDARDS PUMP STATION HSP-4 CABLE & CONDUIT LAYOUT				
Developer SAN ANTONIO WATER SYSTEM				
Cont. Budget Proj.				
SUBMITTED GRUBB ENGINEERING, INC.				
APPROVED _____				
Map No.				Sheet
Section No.			Job No.	
Dr. RDGjCh			E 17	