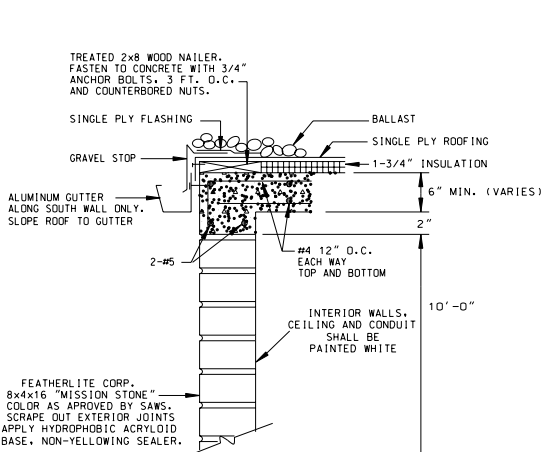


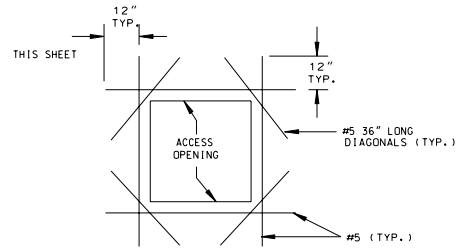
SUMP PUMP DISCHARGE DETAIL

NOTES: 1. SUMP PUMP CONTROLLED BY PIGGYBACK DIAPHRAM PRESSURE SWITCH SET FOR 6" OF WATER

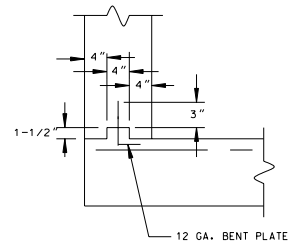


CONTROL HOUSE CONSTRUCTION DETAIL

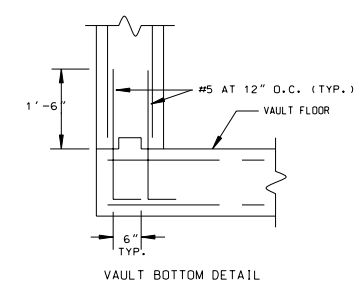
N. T. S.



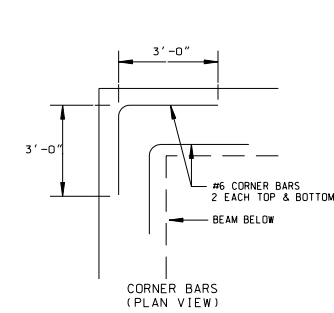
ACCESS OPENING REINFORCEMENT



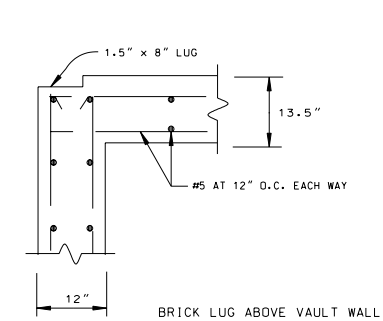
WATER STOP DETAIL



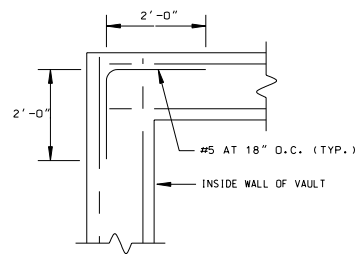
VAULT BOTTOM DETAIL



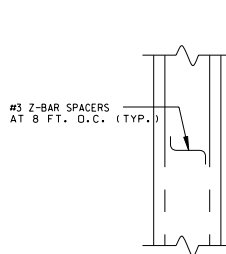
CORNER BARS (PLAN VIEW)



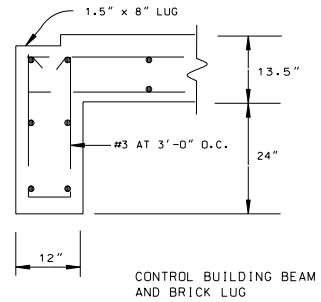
BRICK LUG ABOVE VAULT WALL



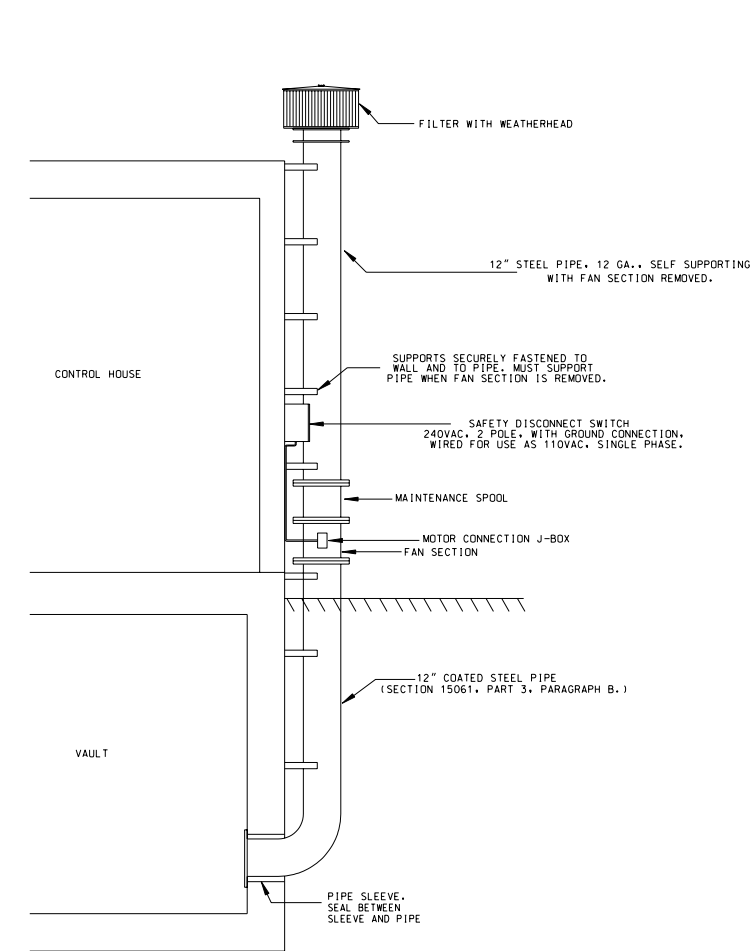
CORNER DETAIL (PLAN VIEW)



REINFORCEMENT SPACERS



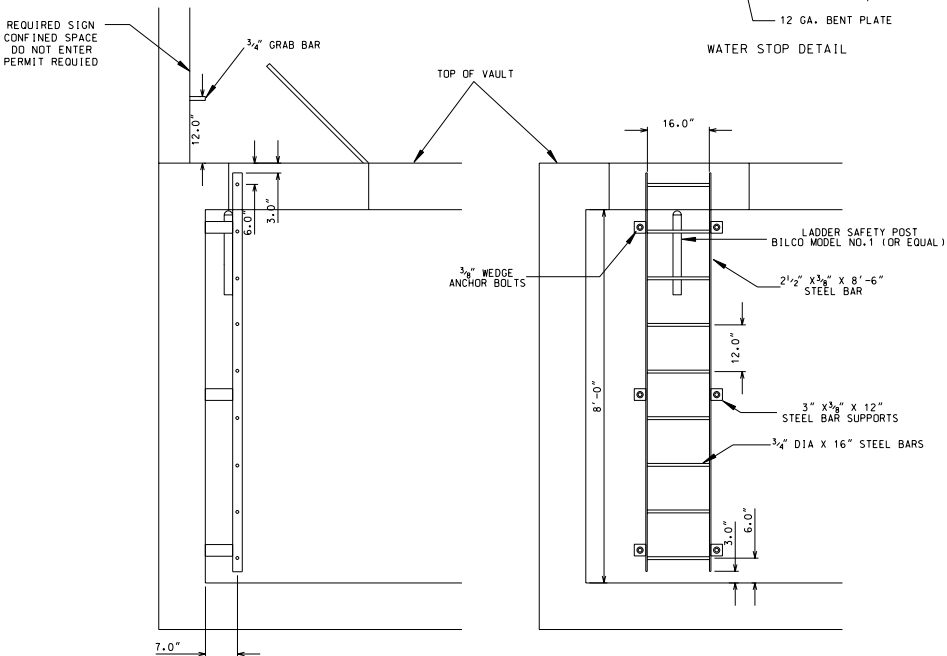
CONTROL BUILDING BEAM AND BRICK LUG



VAULT AIR FAN DETAIL

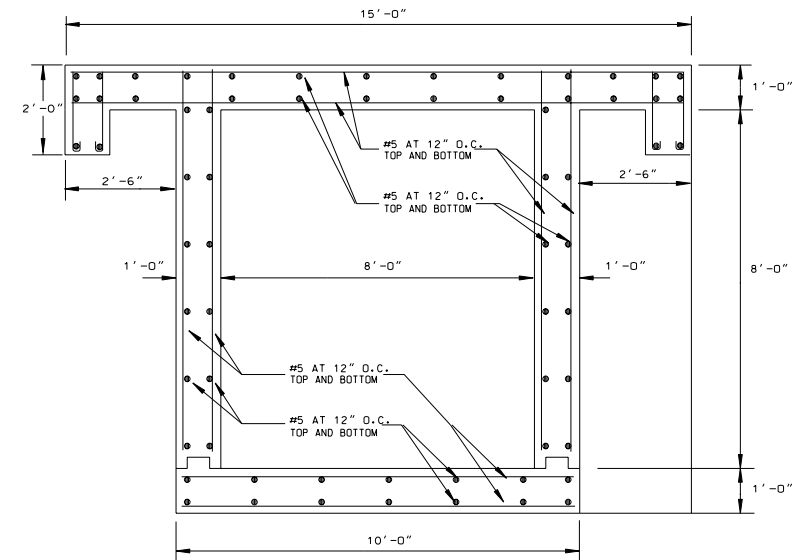
N. T. S.

NOTES:
 1. FAN SHALL BE HARTZELL FAN COMPANY CAT # A48V-12-DA-ST-08 12" FAN, STEEL HOUSING, 1/2 HP SINGLE PHASE MOTOR, WITH GUIDE VANE SECTION, EXTENDED LUBE TUBES, AND EXTENDED MOTOR LEADS.
 2. INLET AIR FILTER SHALL BE UNIVERSAL SILENCER CAT # CCF-12 WITH WEATHERHEAD, AND WIRE MESH FILTER ELEMENT CAT # 81-1200.
 3. FAN NEED TO BE RUNNING CONTINUOUSLY.



LADDER DETAIL

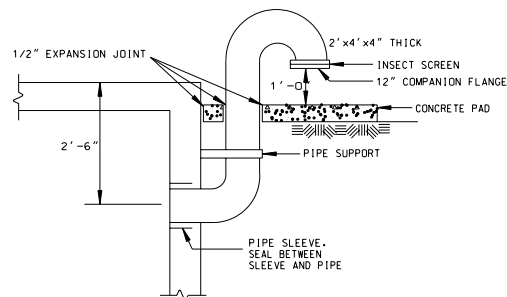
NOTES:
 1. USE COAL TREATED STEEL MATERIAL, GRIND LADDER WELDS SMOOTH, NOT FLUSH.
 2. LADDER TO COMPLY WITH OSHA REGULATIONS (STANDARDS-29CFR) FIXED LADDERS - 1910.27
 3. ACCESS LADDER SHOWN, TYPICAL FOR EGRESS LADDER.



VAULT AND SLAB SECTION

MISCELLANEOUS VAULT CONSTRUCTION DETAILS

NOTES:
 1. CONCRETE SHALL BE MINIMUM OF 3000PSI AT 28 DAY CURING.
 2. REINFORCING STEEL BARS SHALL BE GRADE 60
 3. A WATER PROOF COATING SHALL BE APPLIED TO BELOW GRADE EXTERIOR WALLS OF THE VAULT. COATING SHALL BE KOPPER BITUMASTIC SUPER SERVICE BLACK OR APPROVED EQUAL.




VAULT AIR VENT DETAIL

N. T. S.

NOTES:
 1. INSECT SCREEN SHALL BE 16 MESH BRONZE OR STAINLESS STEEL.

| No. | Revision | Drawn | Approved | Date |
|-----|----------|-------|----------|------|
| | | | | |

Revisions



DESIGN STANDARDS PUMP STATION
ELECTRICAL VAULT DETAILS

Developer SAN ANTONIO WATER SYSTEM
 Cont. Budget Proj.

SUBMITTED GRUBB ENGINEERING, INC.
 APPROVED _____

Map No. _____ Section No. _____ Job No. _____
 Dr. RdcjCh

Sheet

E04