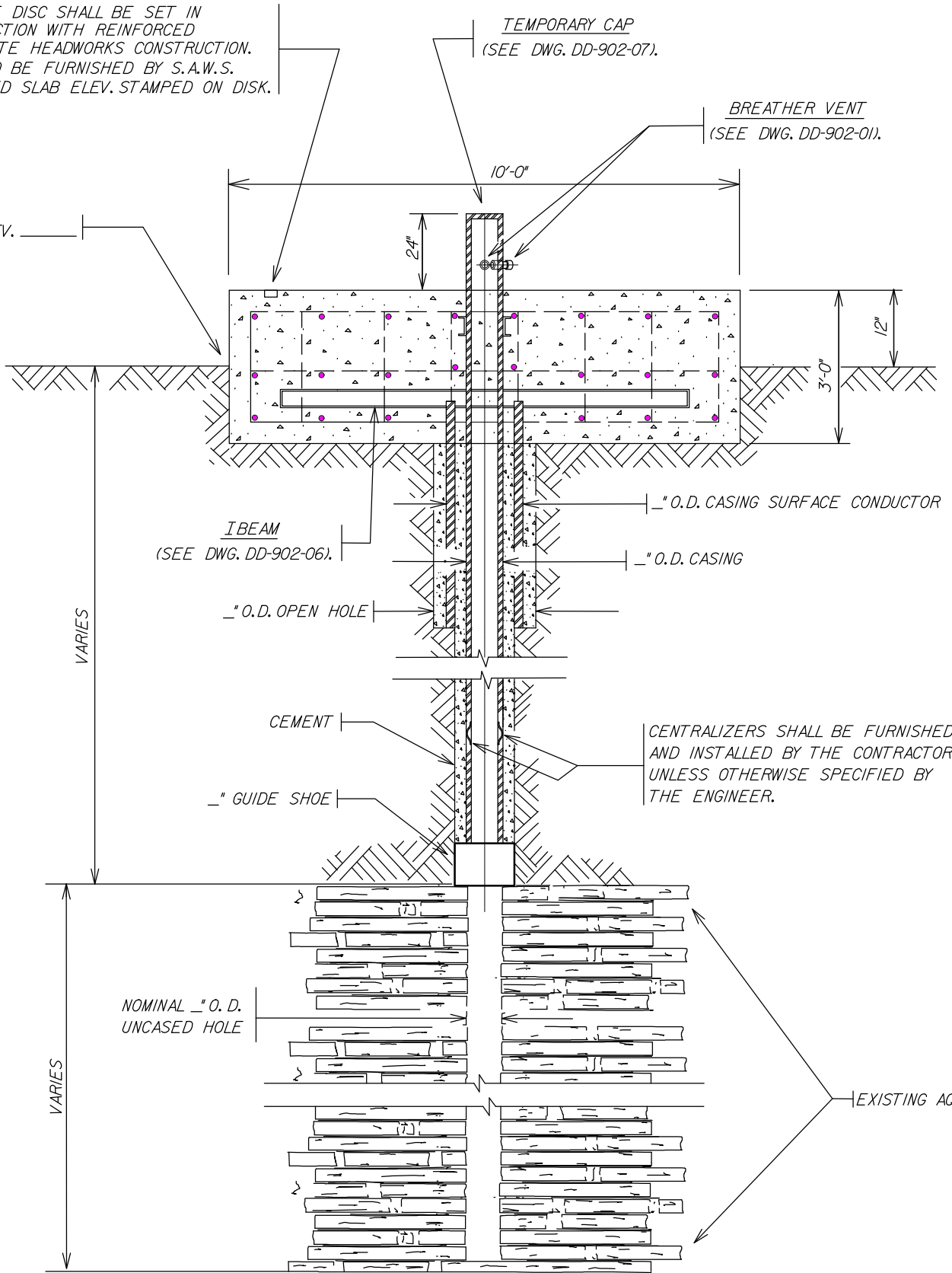


BRONZE DISC SHALL BE SET IN CONJUNCTION WITH REINFORCED CONCRETE HEADWORKS CONSTRUCTION. DISC TO BE FURNISHED BY S.A.W.S. FINISHED SLAB ELEV. STAMPED ON DISK.

TEMPORARY CAP
(SEE DWG. DD-902-07).

BREATHER VENT
(SEE DWG. DD-902-01).

ELEV.



PROPERTY OF
SAN ANTONIO WATER SYSTEM
SAN ANTONIO, TEXAS

WELL CASING

APPROVED

7-14-00

REVISED

DD-902-06

SHEET
1 OF 2