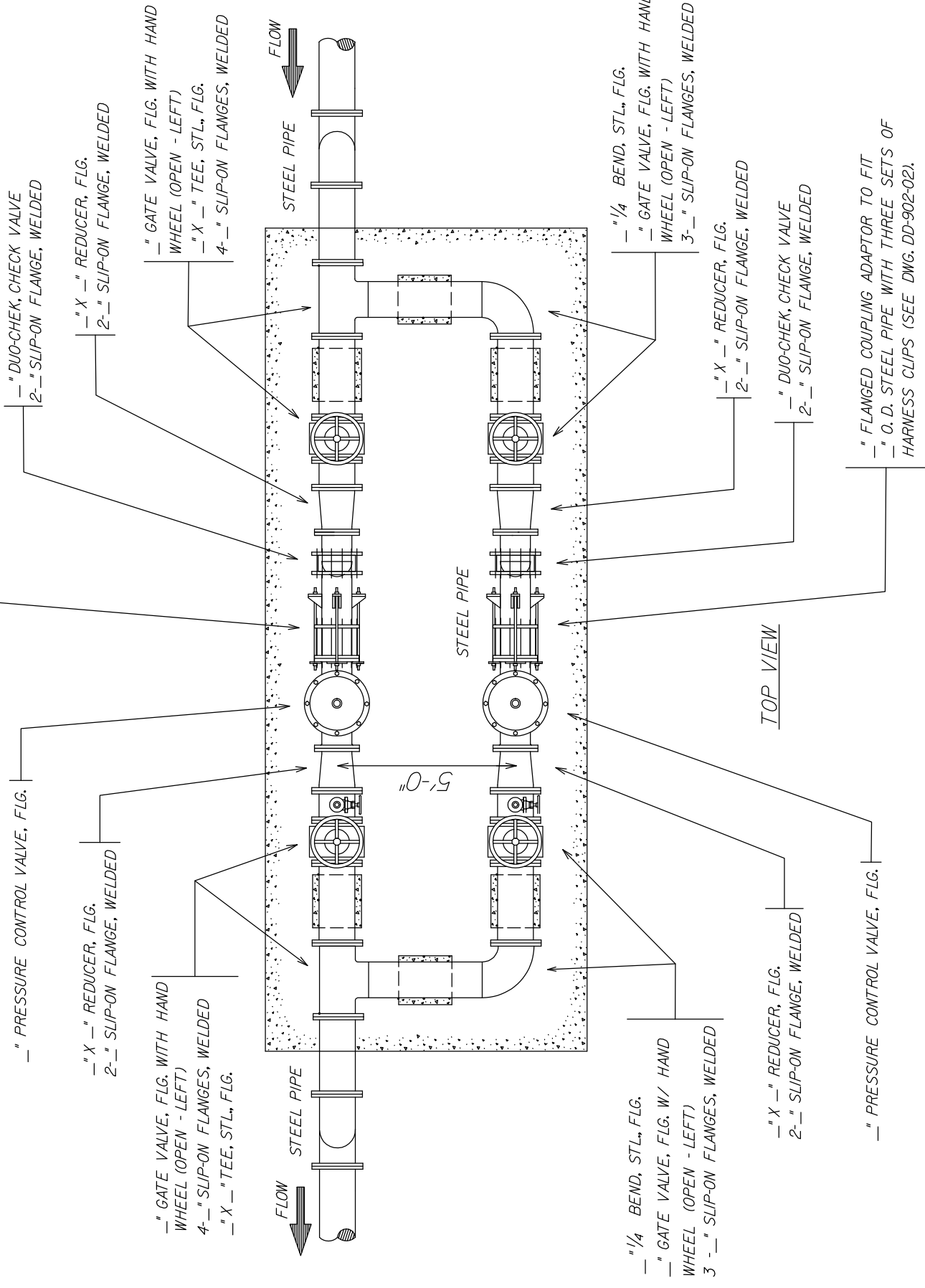


NOTE:

FITTINGS AND PIPE SIZE TO BE DETERMINED BY ENGINEER.



TOP VIEW

PROPERTY OF
SAN ANTONIO WATER SYSTEM
SAN ANTONIO, TEXAS

PRESSURE
REDUCER VALVE
ASSEMBLY

APPROVED
7-14-00

REVISED

DD-901-05

SHEET
2 OF 3

— " DUO-CHEK, CHECK VALVE
2- " SLIP-ON FLANGE, WELDED

— " X — " REDUCER, FLG.
2- " SLIP-ON FLANGE, WELDED

— " GATE VALVE, FLG. WITH HAND
WHEEL (OPEN - LEFT)
— " X — " TEE, STL., FLG.
4- " SLIP-ON FLANGES, WELDED

— " PRESSURE CONTROL VALVE, FLG.

— " X — " REDUCER, FLG.
2- " SLIP-ON FLANGE, WELDED

— " GATE VALVE, FLG. WITH HAND
WHEEL (OPEN - LEFT)
4- " SLIP-ON FLANGES, WELDED
— " X — " TEE, STL., FLG.

— 1/4 BEND, STL., FLG.
— " GATE VALVE, FLG. WITH HAND
WHEEL (OPEN - LEFT)
3- " SLIP-ON FLANGES, WELDED

— " X — " REDUCER, FLG.
2- " SLIP-ON FLANGE, WELDED

— " DUO-CHEK, CHECK VALVE
2- " SLIP-ON FLANGE, WELDED

— " FLANGED COUPLING ADAPTOR TO FIT
— " O. D. STEEL PIPE WITH THREE SETS OF
HARNESSE CLIPS (SEE DWG. DD-902-02).

— " X — " REDUCER, FLG.
2- " SLIP-ON FLANGE, WELDED

— " PRESSURE CONTROL VALVE, FLG.