



Silverhorn Golf Course 24-Inch Rehab Package

SAWS construction work on this project will rehabilitate approximately 0.70 miles of 24-inch through 30-inch gravity sewer. The sewer mains are located within Silverhorn Golf Course. This project will be rehabilitating deteriorated pipe using Cure-in-Place Pipe method. This project is necessary to replace and rehabilitate sewer infrastructure due to condition and was prioritized as part of the EPA Consent Decree.

When Will Work Occur?

Construction is planned for the winter of 2019. Estimated construction duration is 6 months.

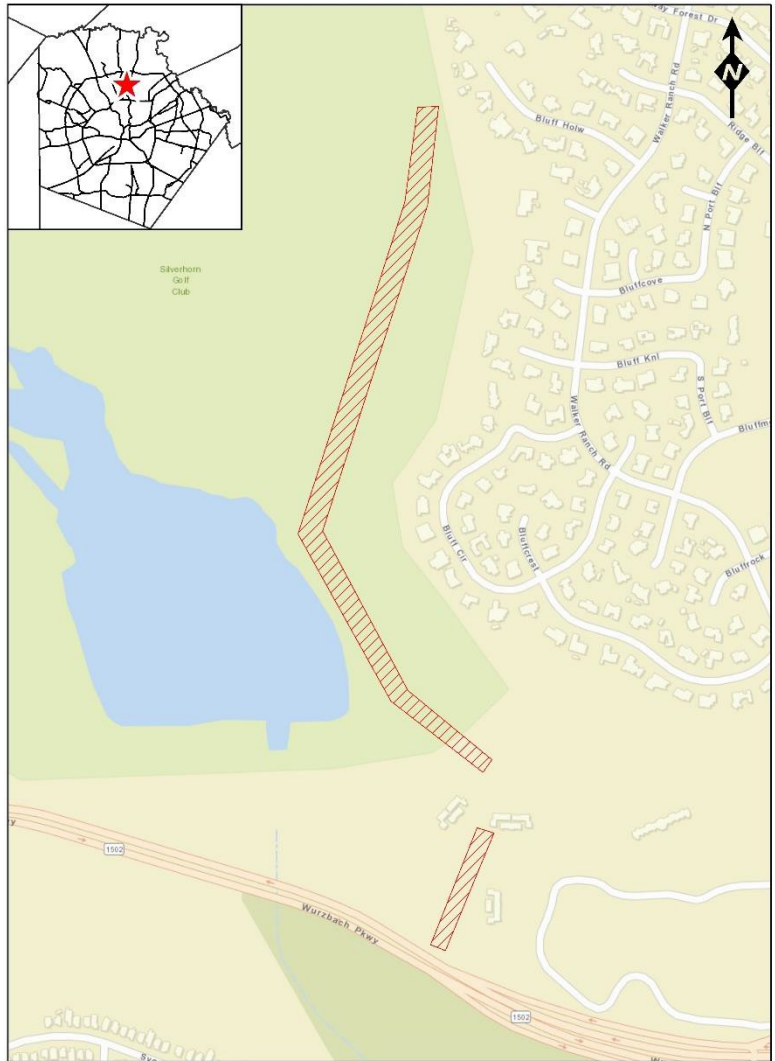
Construction Elements:

- ✓ Construction of this project will be within Silverhorn Golf Course and the Park at West Avenue apartment complex.
- ✓ Approximately 3,690 linear feet of 24-inch and 30-inch reinforced concrete pipe sanitary sewer main are to be rehabilitated using CIPP.
- ✓ Project is of an urgent nature.

For more information:

SAWS Contract Administration
 Diana Woltersdorf
 210-233-3372

SAWS Public Relations
 Cecilia Picazo
 210-233-3750



SILVERHORN GOLF COURSE 24-INCH REHAB PACKAGE

Legend

 Project Location



