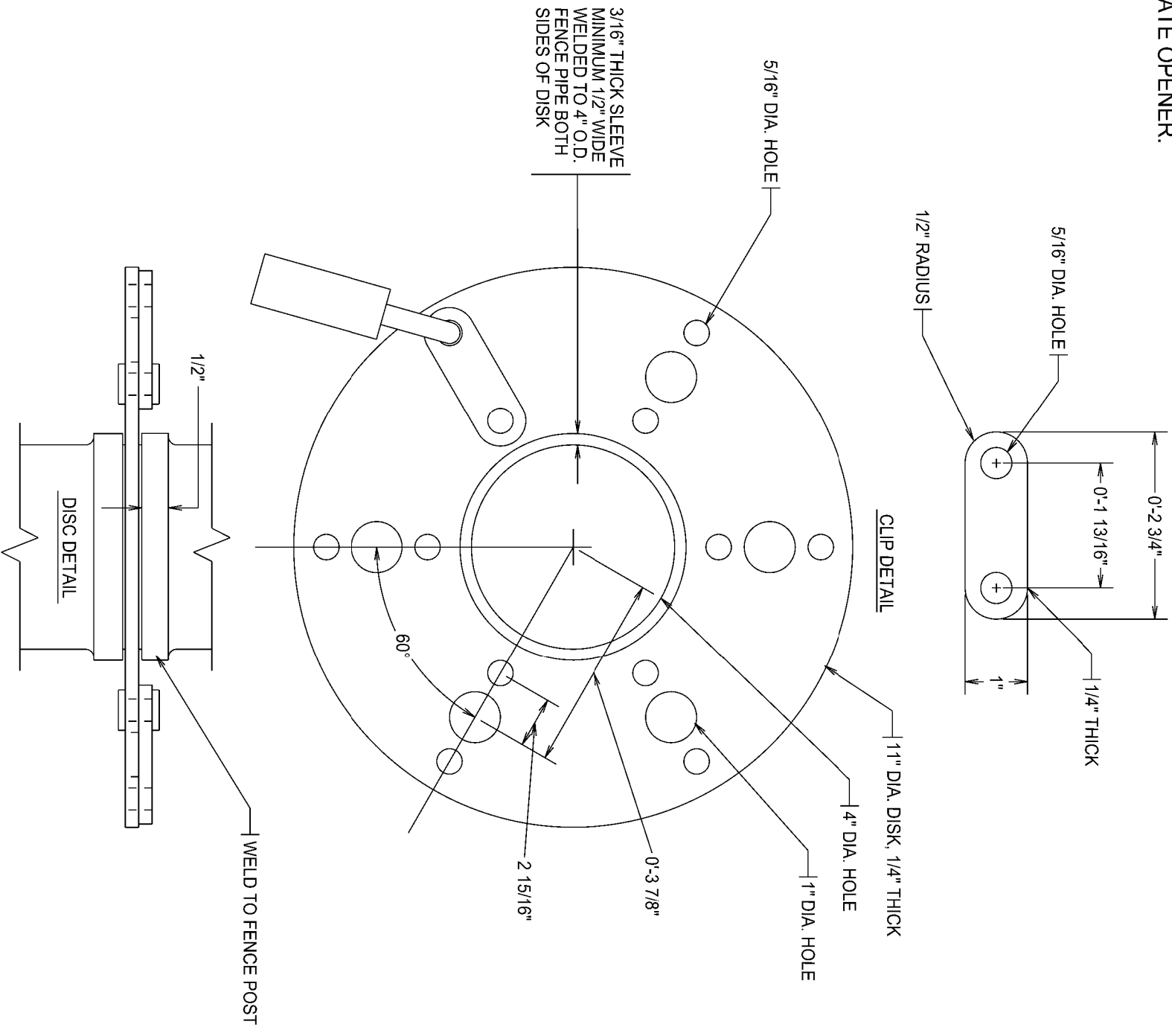


NOTE:
NO DISC ASSEMBLY WILL
BE USED ON ANY ROLLING
GATE WITH AN AUTO-MATIC
GATE OPENER.



NOTE:
1. ALL SPARE CLIPS TO BE COMPLETELY WELDED ALL AROUND. TACK WELD WILL NOT BE ACCEPTED.

DD-903-18

SHEET
3 OF 3

SAN ANTONIO WATER SYSTEM
SAN ANTONIO, TEXAS



HEAVY DUTY CANTILEVER SLIDE GATE - DISC DETAIL

APPROVED:
MARCH 2011

REVISED:
FEB 2017