



Central Sewershed Package 10 (Terrell Hills)

SAWS construction work on this project will rehabilitate approximately 3,406 linear feet of 6-inch to 10-inch gravity sewer mains located in the City of Terrell Hills via cured in place pipe (CIPP) method. This project is part of the work required by San Antonio’s agreement with the EPA to rehabilitate deteriorated sewer infrastructure across the city.

When Will Work Occur?

Estimated construction duration is 6 months.

Construction Elements:

- ✓ Rehabilitation of approximately 3,406 linear feet of 6-inch to 10-inch gravity sewer mains via cured in place pipe (CIPP) method and point repairs. This will address sewer mains in need of repair based on condition assessment and will also rehabilitate or replace associated manholes.
- ✓ Bypass of small and large diameter sanitary sewer required.

For more information:

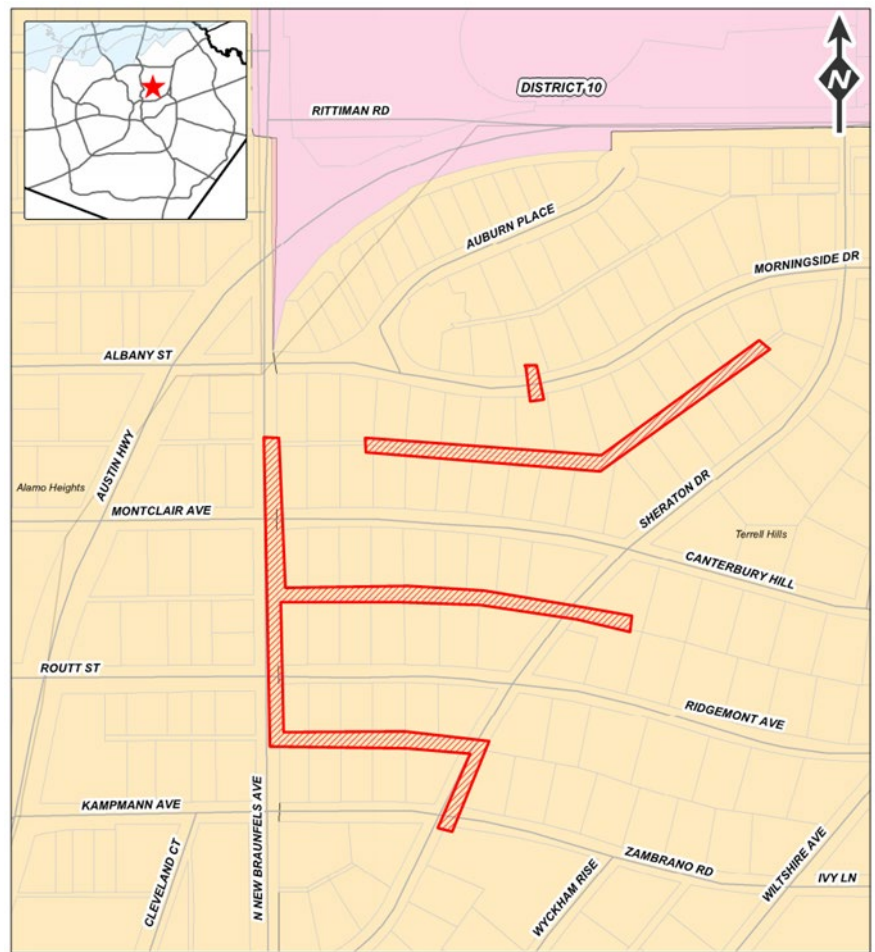
Engineering Contact:

Carmen Groth, PE
Carmen.Groth@saws.org

SAWS Public Relations:

Byron Gipson
210-233-2977

Cecilia Picazo
210-233-3750



CENTRAL SEWERSHED PACKAGE 10 (TERRELL HILLS)

LEGEND
Project Limits

